

Washington County Bikeway and Trail Plan

Final Planning Committee Meeting



TOOLE
DESIGN

Overview of Open House (February 13)

- Over 50 people attended
- Mostly supportive
- Concern/pushback from Ice Age Trail Alliance members



Key Stakeholder Engagement Meetings

- **Wisconsin DNR (March 5)**
- **National Park Service (March 6)**
- **Ice Age Trail Alliance (March 8)**
- **Ozaukee-Washington Land Trust (March 1)**
- **Cedar Lakes Conservation Found. (March 6)**

Agency Review

- **Wisconsin DOT staff reviewed a revised draft plan and provided comments on April 2**
- **Draft plan was also made available to Wisconsin DNR and National Park Service**
- **NPS provided comments on April 9**

Revisions to Draft Plan

- **Throughout: “Plan is a guide,” “not field- verified,” “further engineering necessary”**
- **Added Ice Age Trail to maps, intro text**
- **Added caveats for Ice Age Trail**
 - *May* present opportunities, not *can*
 - Land use restrictions of Ice Age Trail properties
- **Ch. 3: Public Engagement and Outreach**
 - Summary of Open House
 - Summaries of the Stakeholder Meetings and WisDOT review

Revisions to Draft Plan, continued

- **Ch. 4: Policy and Program Recommendations**
 - **Paved shoulders: Clarified standards for County highways**
 - **Rumble strips: Added recommendation to use WisDOT policy and design criteria**
 - **Clarified the Resolution of Support recommendation**
 - **Full-time bikeway & trails coordinator for Washington County**
 - **Meet with developers and builders' associations to build awareness of Plan**

Revisions to Draft Plan, continued

- **Ch. 5: Bikeway and Trail Facility Recommendations**
 - Revised descriptions in “Types of Bikeway and Trail Facilities”
 - Some existing sidepaths in Hartford, Germantown, show up as “recommended” because they need to be rebuilt to proper standards

Revisions to Draft Plan, continued

Ch. 6: Project Prioritization, Implementation, Funding

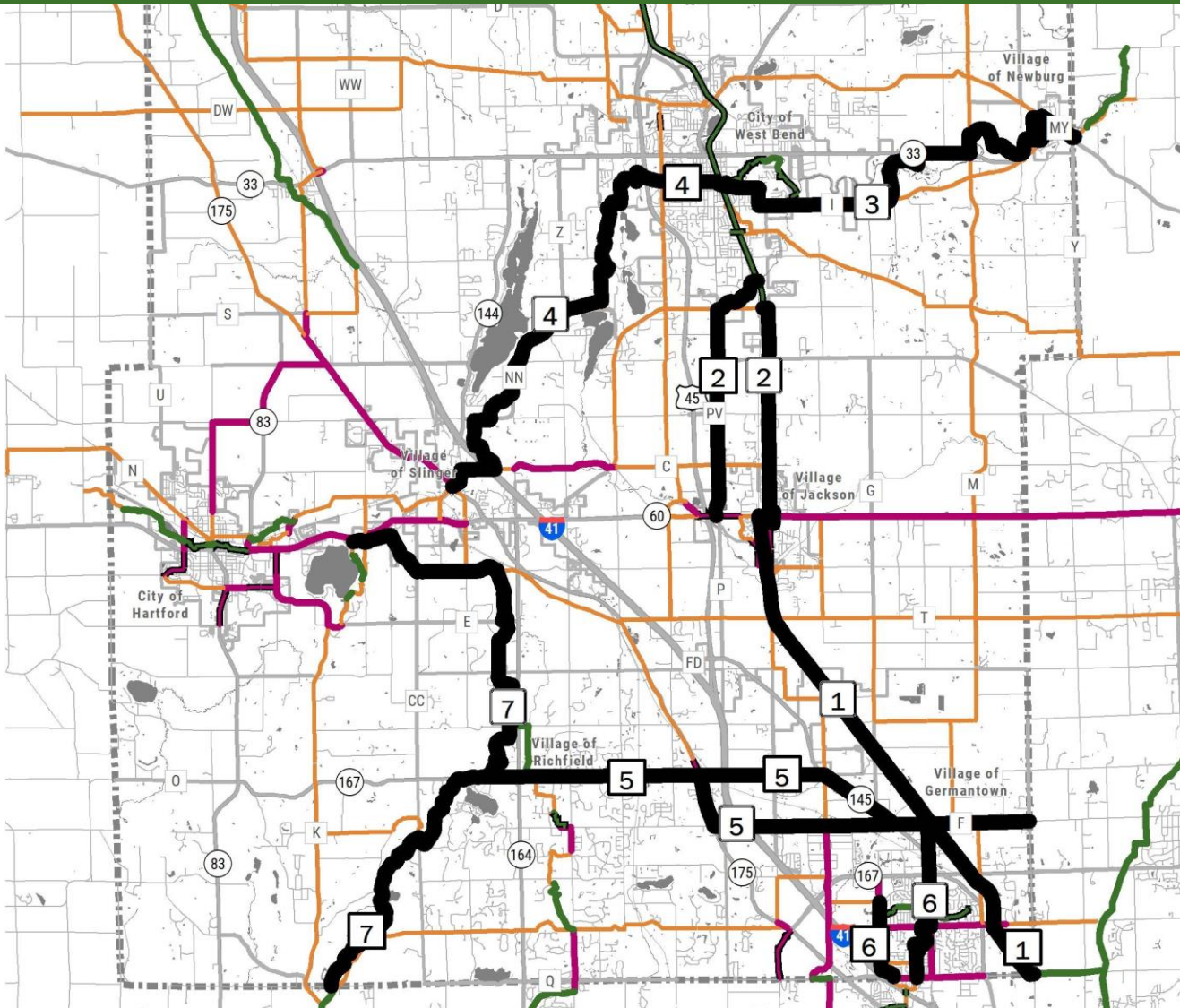
- **Changes to many of the Priority Corridors (will review in more detail)**
- **“Remaining Network” → “Connector Network”**
- **Reworded Project Timing section**
- **Added snow removal considerations to Maintenance Section**
- **Added Strategic Action Plan outline to Next Steps section**
- **Added notes about coordination, communication, and oversight to Next Steps**

Revisions to Draft Plan, continued

Added Appendices

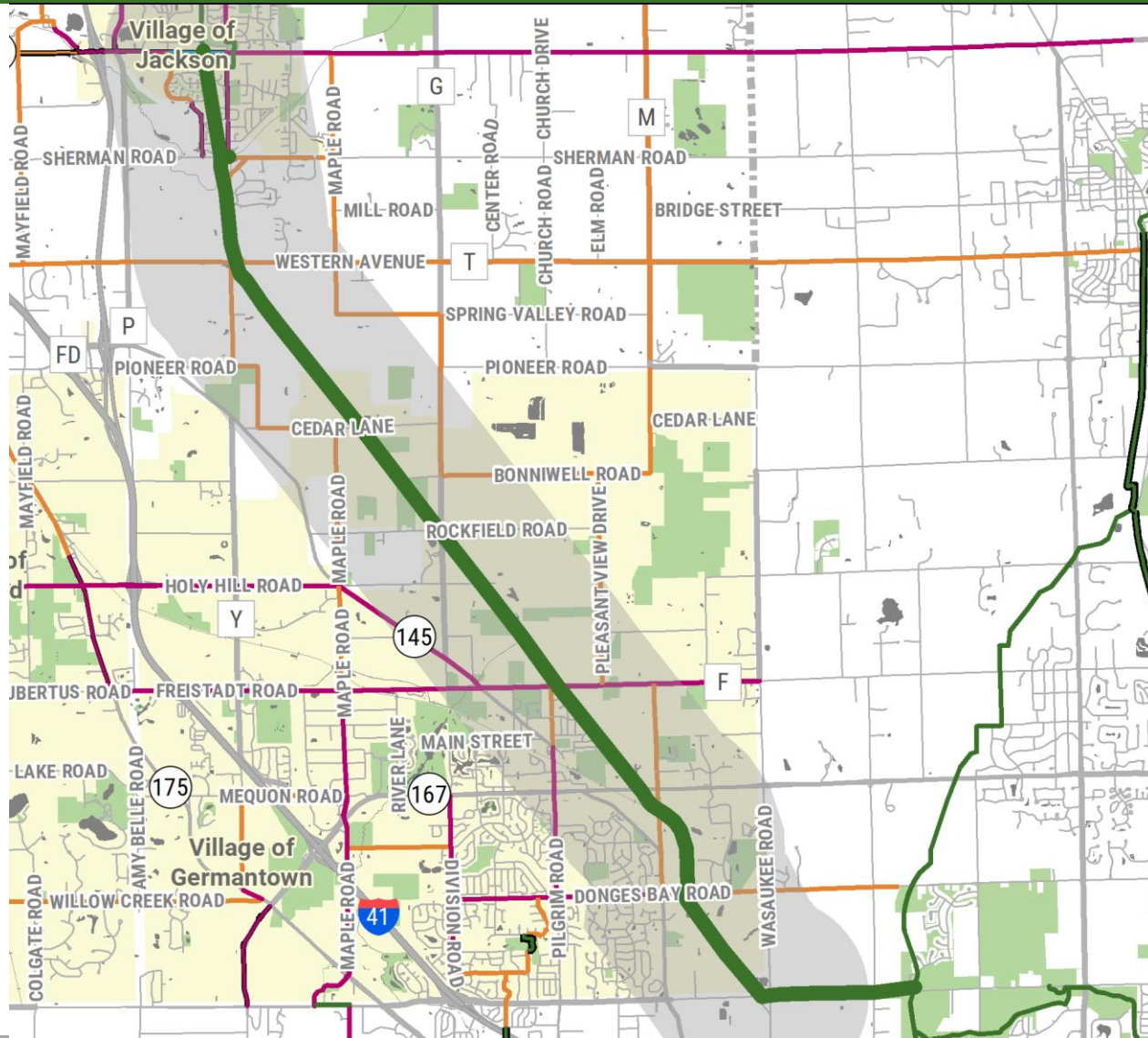
- **Appendix A: Roadway Bicycle Compatibility Score**
- **Appendix B: Summary of First Interactive Map**
- **Appendix C: Summary of Second Interactive Map**
- **Appendix D: Documentation of Inter-Agency Coordination**

Revisions to Priority Corridors



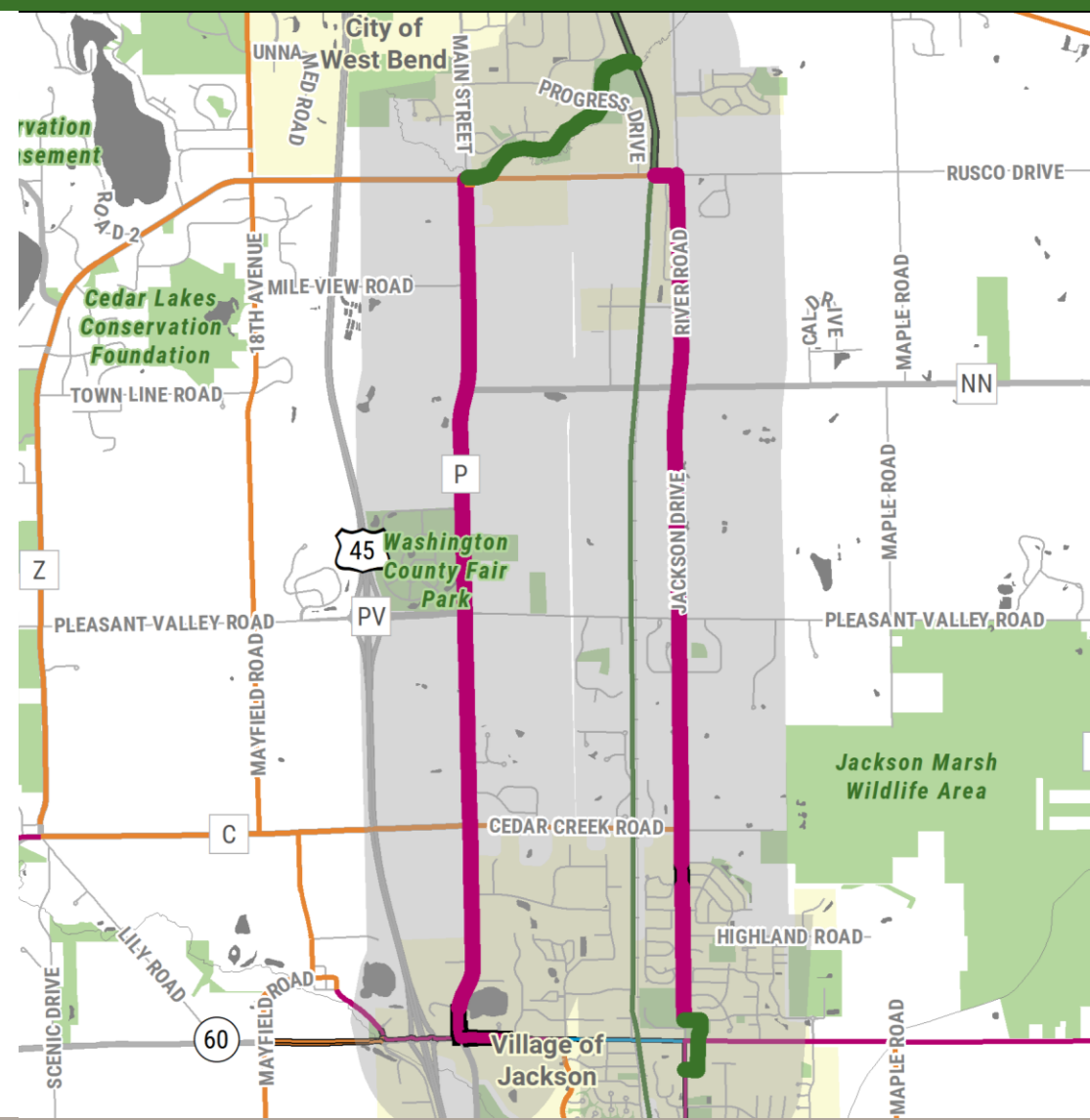
Priority Corridor 1: Jackson to Germantown

- Added note: path could continue on Donges Bay Road instead of County Line Road

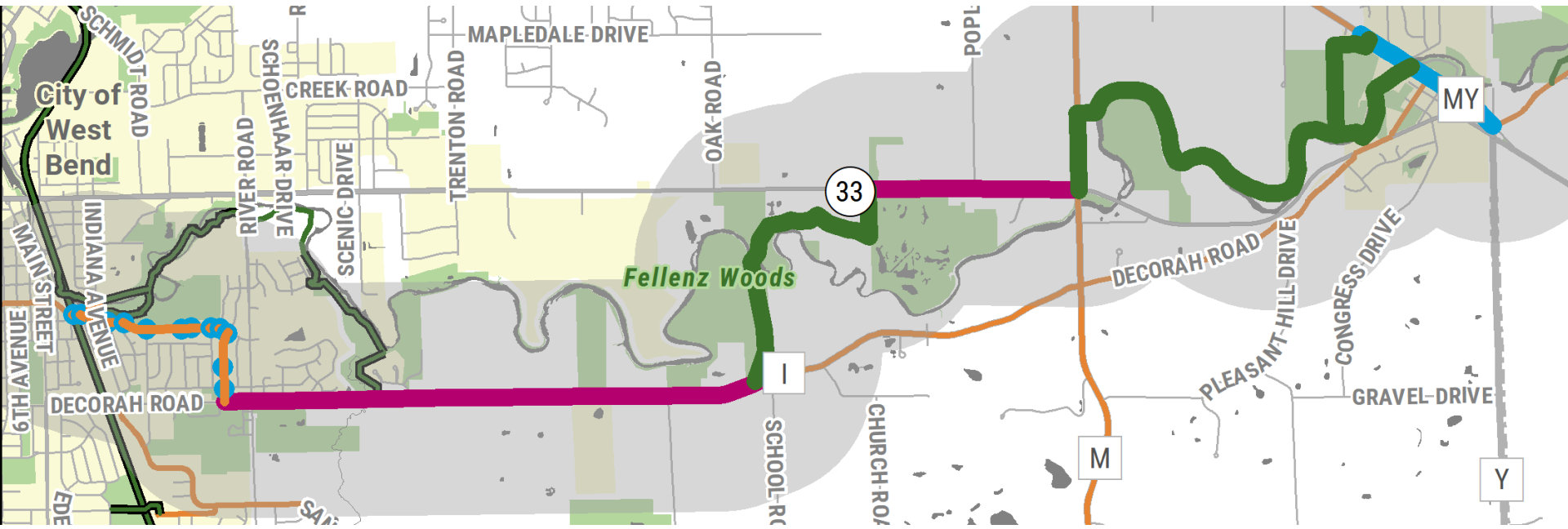


Priority Corridor 2: West Bend to Jackson

- Fixed reference to street crossing near Jackson Park
- Added caveat about sidepaths in areas with frequent driveway crossings



Priority Corridor 3: West Bend to Newburg



Priority Corridor 3: West Bend to Newburg

Changes near Fellenz Woods:

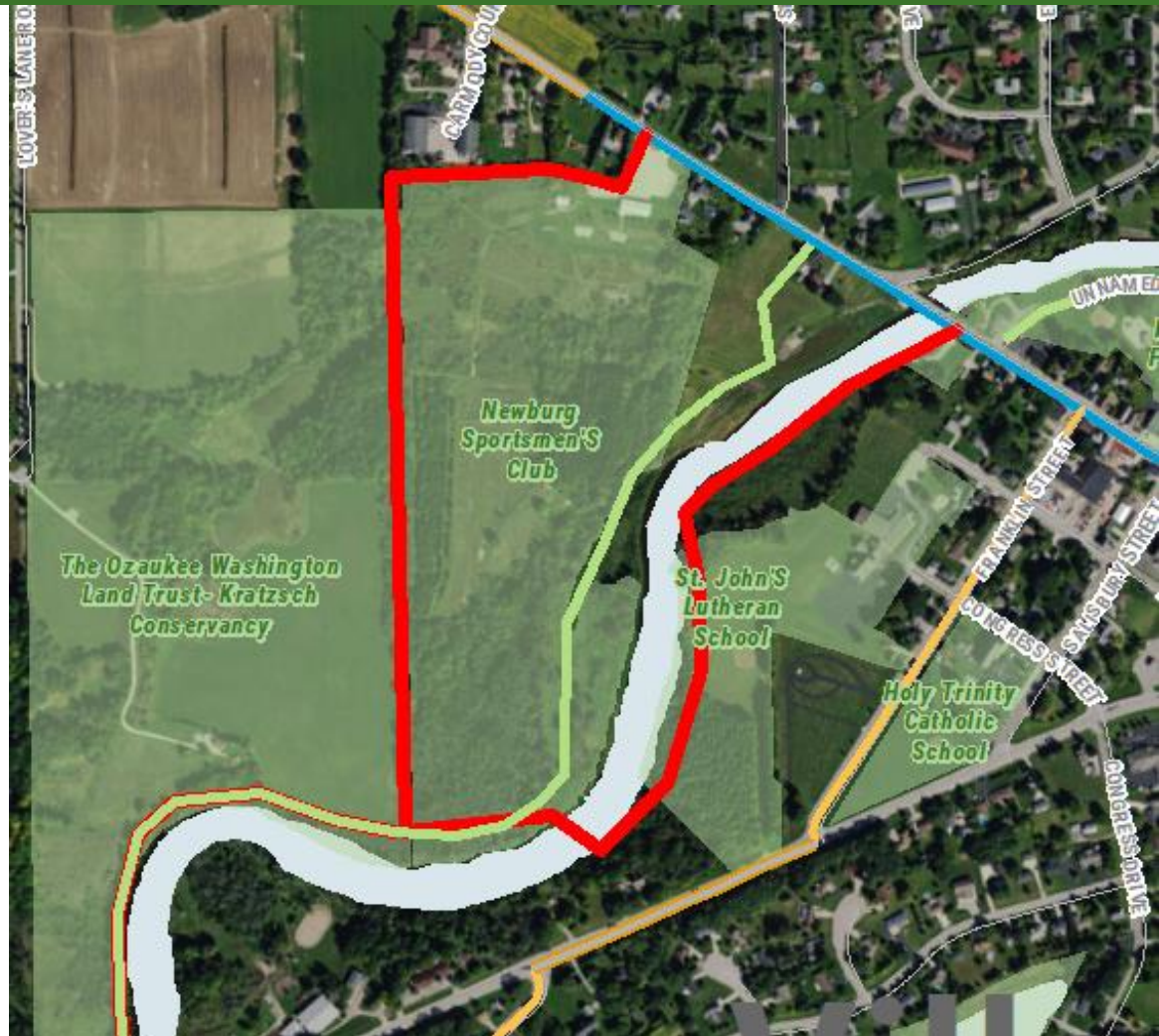
- Realigned to cross Milwaukee River in Fellenz Woods
 - Old=**green**
 - New=**red**
- Noted possible impacts to wetlands, endangered resources



Priority Corridor 3: West Bend to Newburg

Changes in Newburg

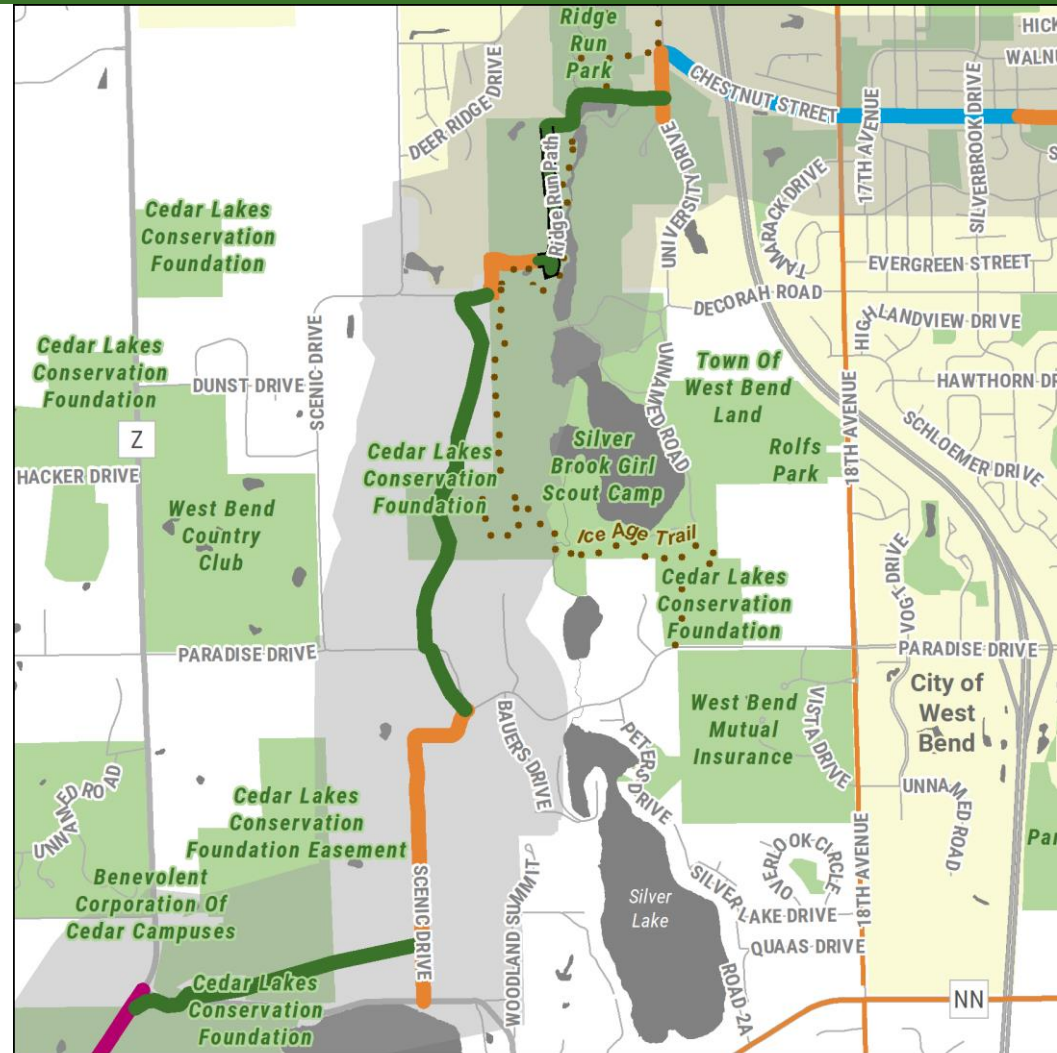
- Land available due to dam removal → two path alternatives
 - Old=green
 - New=red
- Cost of additional bridge over Milwaukee River
- Newburg: bike lanes on Main Street



Priority Corridor 4: West Bend to Slinger

Northern Section

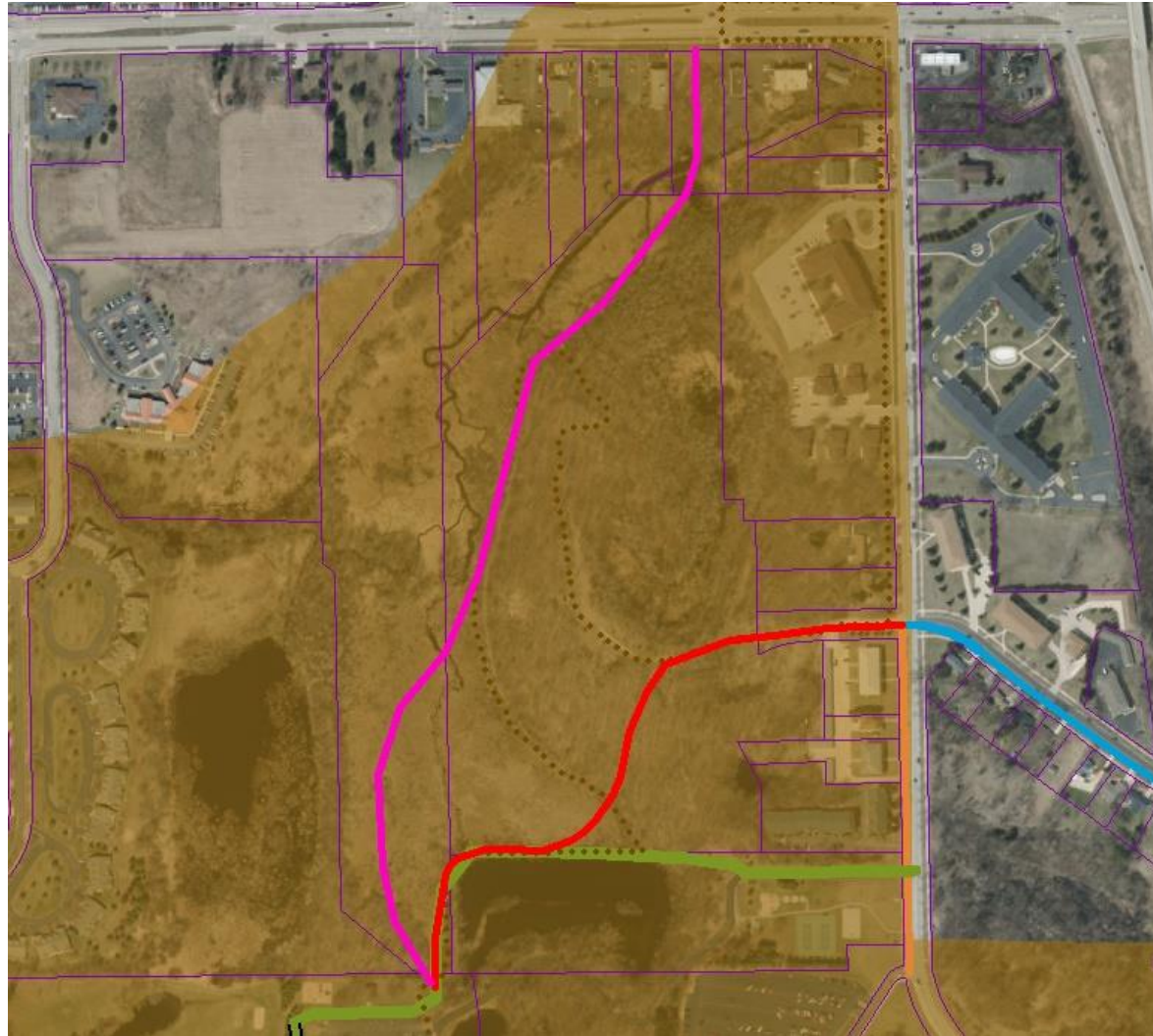
- Adjustments to move farther away from IAT
- Opportunities to partner with IATA
- Cedar Lakes Conservation Foundation—may have deed restrictions



Priority Corridor 4: West Bend to Slinger

Changes in Ridge Run Park by Ice Age Trail

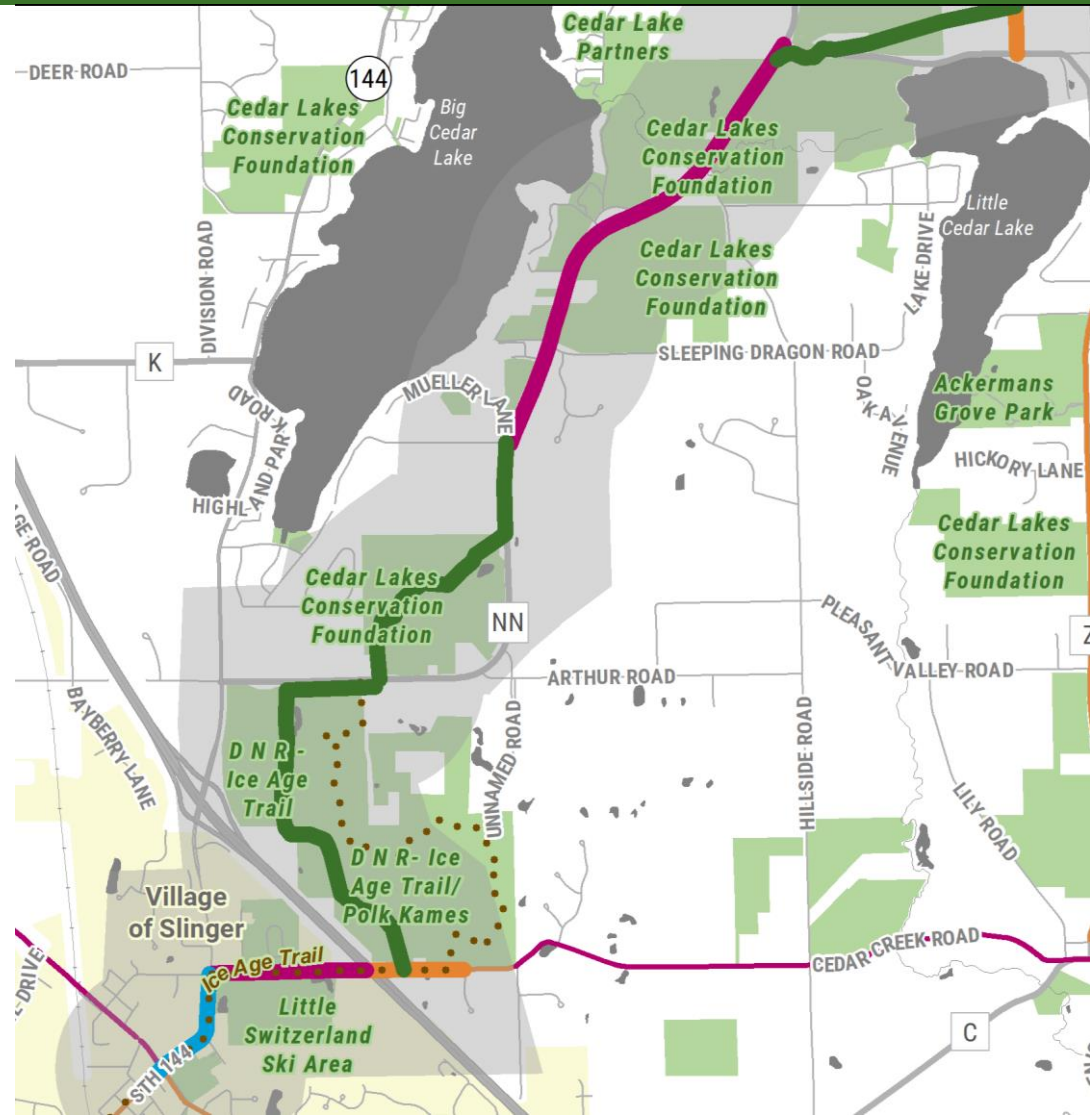
- Old=**green**
- New=**red**
- Old Ice Age Trail=**dotted line**
- New Ice Age Trail=**pink**



Priority Corridor 4: West Bend to Slinger

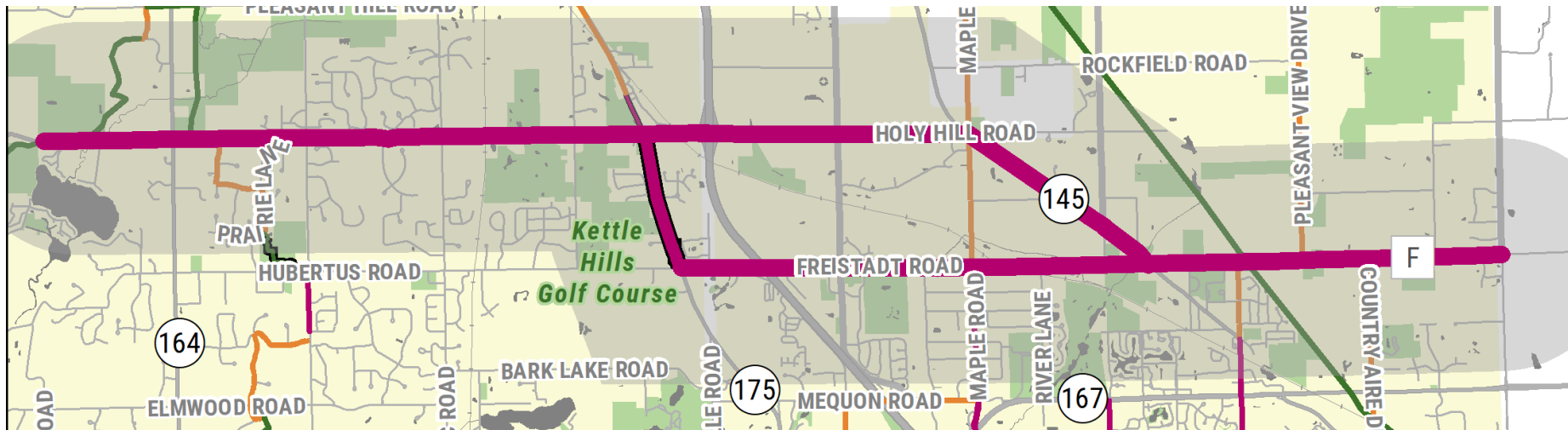
Southern Section

- DNR Polk Kames Property
 - Land use restrictions



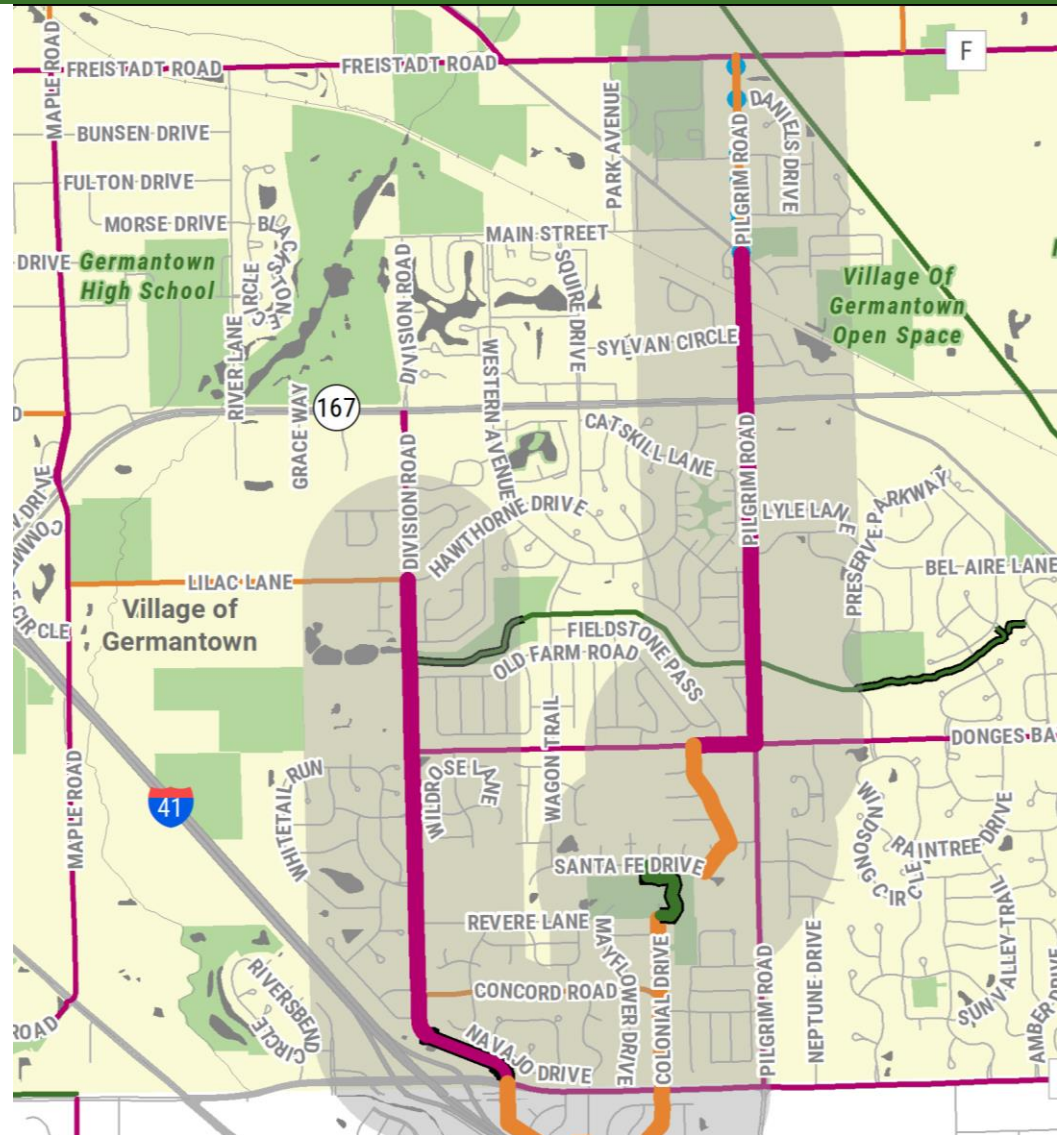
Priority Corridor 5: Holy Hill Rd-Freistadt Rd

- RR bridge near Kettle Hills Golf Course: separate tunnel through embankment; added cost
- STH 145 over Menomonee River: separate bridge and boardwalk; added cost
- STH 145/Freistadt Road: concerns about bike/ped safety at intersection



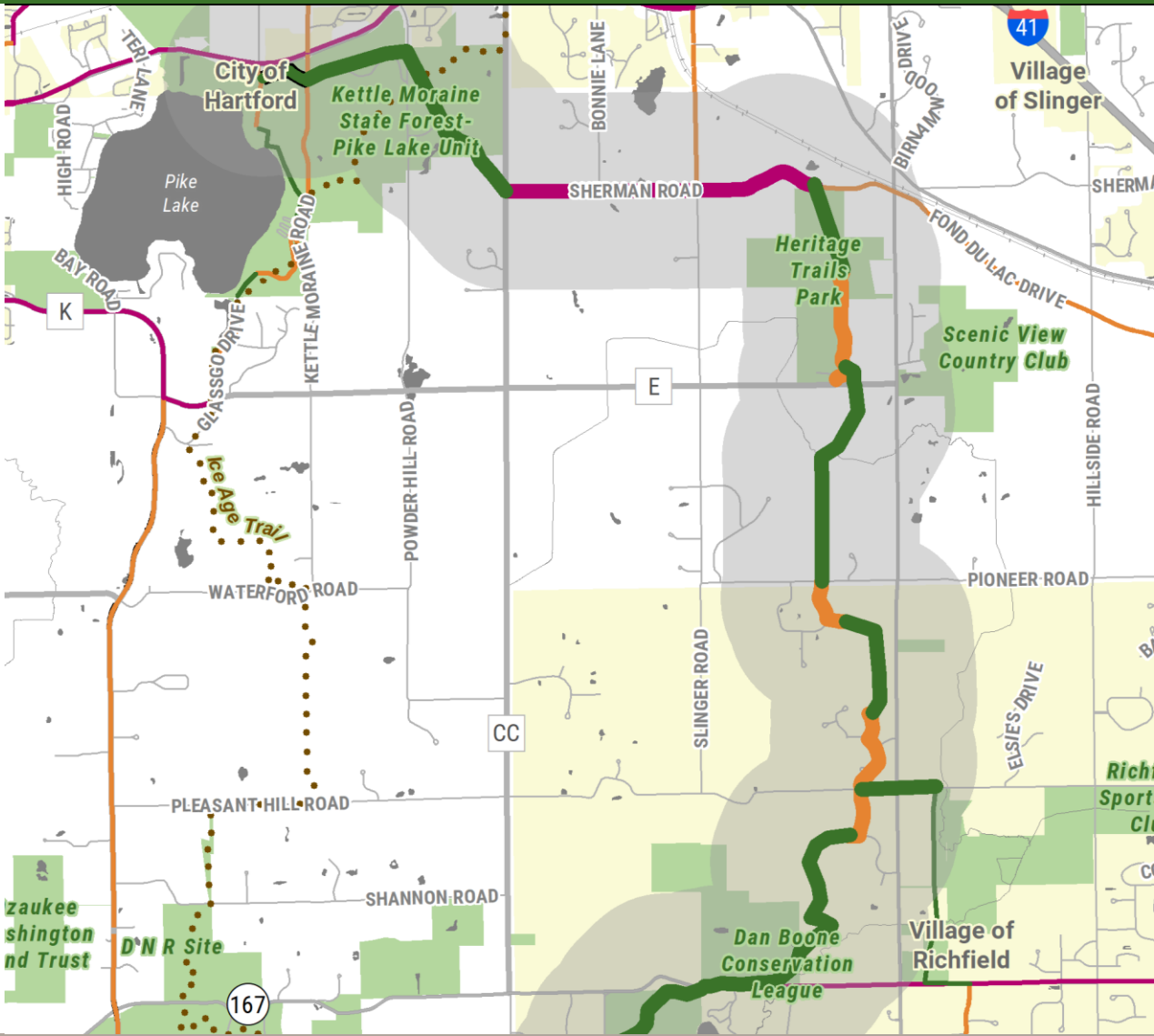
Priority Corridor 6: Germantown to Bugline Trail

- Continue south on Colonial Drive
- Added connecting routes in Germantown
 - Recommended sidepaths on Pilgrim Road, County Line Road
 - Added existing/recommended paths to network



Priority Corridor 7: Pike Lake to Loew Lake

Northern Section



Priority Corridor 7: Pike Lake to Loew Lake

Changes in Pike Lake

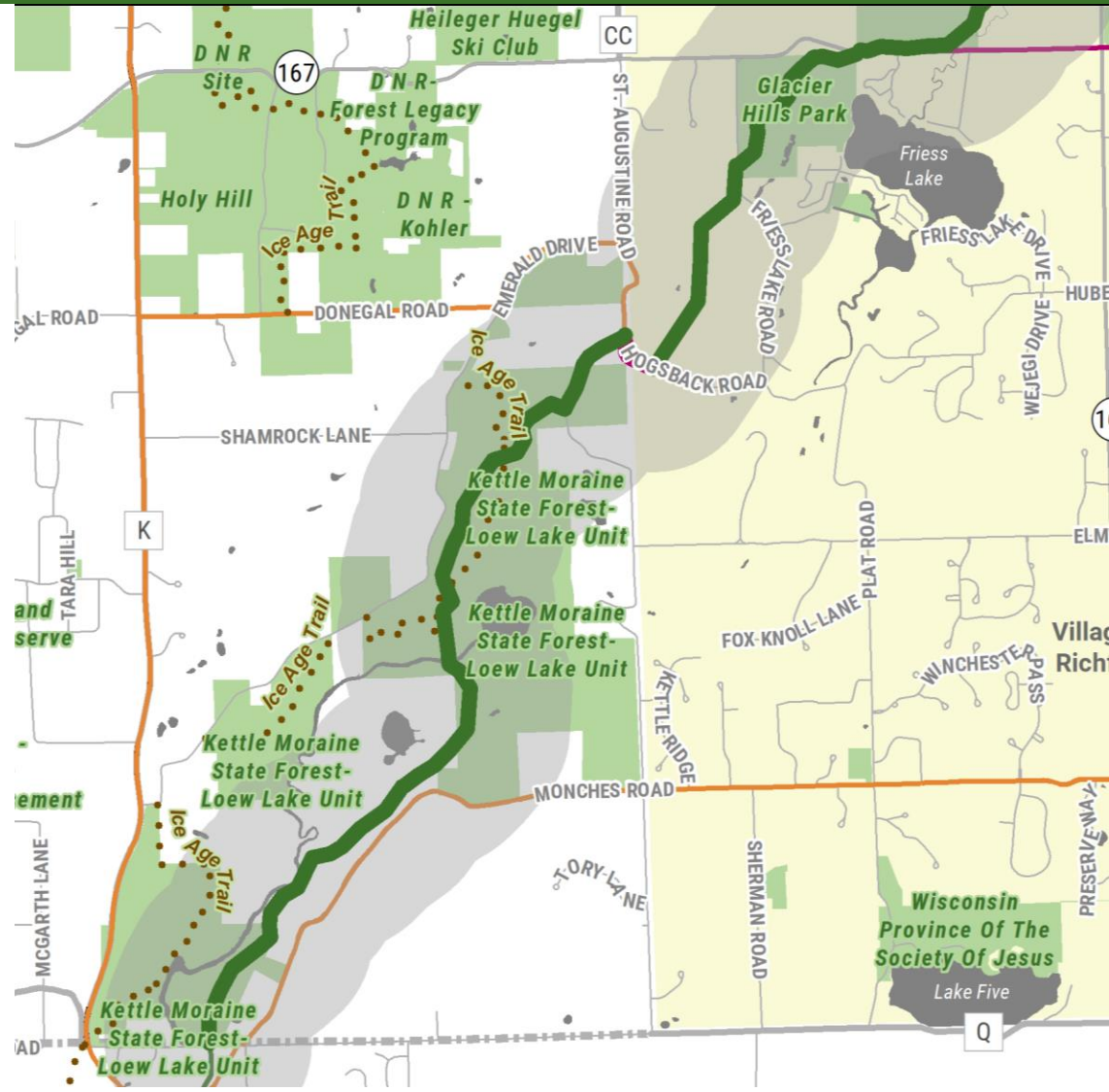
- DNR will build path between Pike Lake and campground
- New boat launch driveway; connecting route can use the drive
- Old=**green**
- New=**red**
- Ice Age Trail=**dotted line**



Priority Corridor 7: Pike Lake to Loew Lake

Southern Section

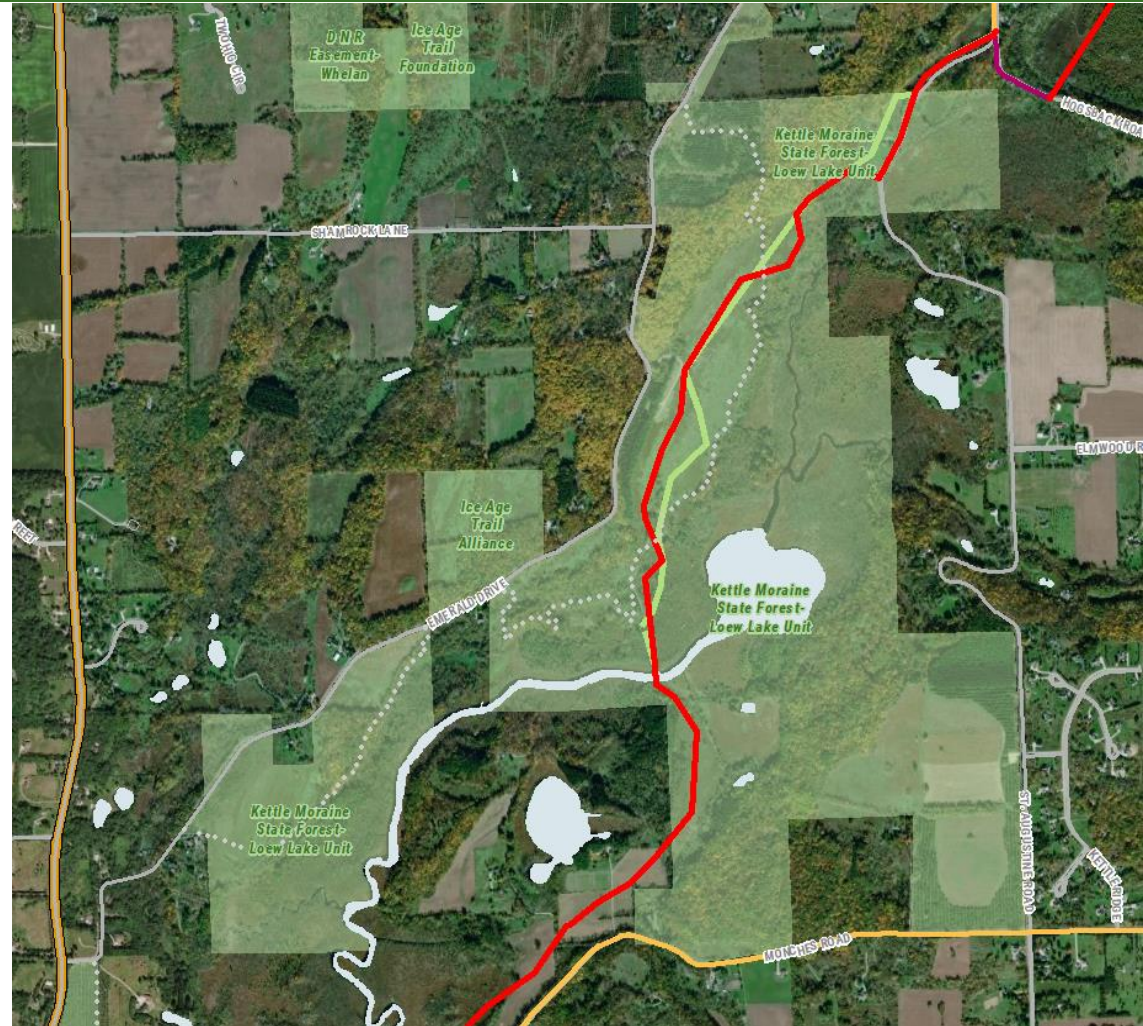
- Removed Hogsback sidepath, replaced with path through open space/wetlands
- Loew Lake:
 - Land use restrictions
 - Equestrian paths
 - IAT crossings



Priority Corridor 7: Pike Lake to Loew Lake

Changes in Loew Lake

- Path moved away from IAT, fewer crossings
- Crossings are at right angles
 - Old=**green**
 - New=**red**
 - Ice Age Trail=**dotted line**
- **Alternative: Use Emerald Drive to connect to CTH K**



Next Steps of Plan Adoption

- **County Public Works Committee: May 22**
- **County Board Meeting: June 12**
- **Strategic Plan Development by internal staff workgroup**
- **Establish Intergovernmental Bike/Ped Council**